

CRAMER SEATING TEXTILE SELECTIONS



CONTENTS:

FABRIC GRADE 1	page	2
FABRIC GRADE 2	page	3
FABRIC GRADE 3	page	4
FABRIC GRADE 4	page	5
FABRIC GRADE 5	page	6
FABRIC GRADE 6	page	7
RHINO PLUS	page	8
VINYL GRADE 2	page	9
VINYL GRADE 3 & 4	page	10
VINYL GRADE 5 & 6	page	11
ESD	page	12

Cramer's textiles meet the same stringent performance standards that we demand of our premier line of task chairs and stools. The entire offering exceeds our 100,000 double rub requirement and a majority of our fabrics meet advanced environmental and sustainability standards. This carefully selected group of solids and patterns offers a variety of design options for every work space.

FABRIC GRADE 1 Competitively priced, stain repellant polyester fabrics in popular solids.

MAYER FORTE



Cadet 1FC



Tuxedo 1FT



Slate 1FS



Rouge 1FR



Pumice 1FP

Material Content:
100% Polyester

Double Rub Rating:
183,000

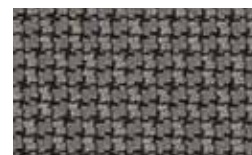
Finish:
Repellant

Properties:
Soil & Stain Resistant
Reduced Environmental Impact 

MAYER CROSS CHECK



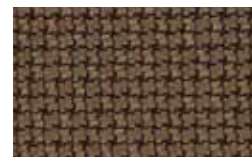
Slate Black 1CS



Platinum 1CP



Lapis 1CL



Otter 1CO



Vermillion 1CV

Material Content:
100% Polyester

Double Rub Rating:
258,000

Finish:
Repellant

Properties:
Soil & Stain Resistant
Reduced Environmental Impact 

FABRIC GRADE 2 Performance fabrics in sophisticated colors and rich textures. Stain repellant.

MOMENTUM ACE



Regal 2AR



Carbon 2AC



Tuxedo 2AT



Dream 2AD



Pesto 2AP

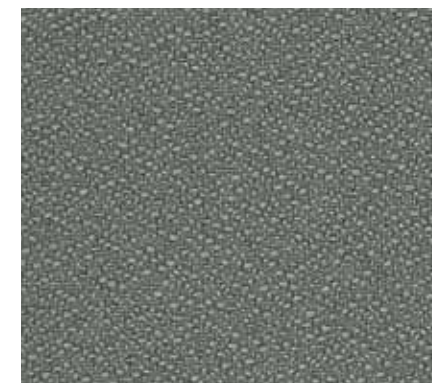
Material Content:
100% Polyester

Double Rub Rating:
100,000

Finish:
Teflon

Properties:
Soil & Stain Resistant
Reduced Environmental Impact 

MAYER FOUNDATION



Mercury 2FM



Ebony 2FE



Purple Haze 2FP



Sapphire 2FS



Blue Mist 2FB

Material Content:
100% Polyester

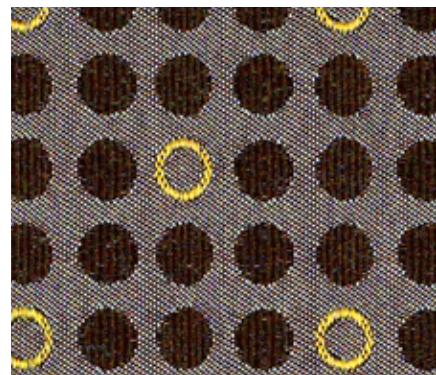
Double Rub Rating:
1,000,000

Finish:
Repellant

Properties:
100% Recycled 
Soil & Stain Resistant
Reduced Environmental Impact 

FABRIC GRADE 3 Stain-resistant fabrics in stylish geometric prints. Polyester with acrylic backing.

MOMENTUM KNACK



Fresco 3NF



Brisk 3NB



Zing 3NG



Zest 3NZ



Teak 3NT

Material Content:
100% Polyester

Double Rub Rating:
100,000

Finish:
Repellant

Properties:
Soil & Stain Resistant
Reduced Environmental Impact 



FABRIC GRADE 4 Recycled woven fabrics with Teflon® coating and acrylic backing.

MOMENTUM STANCE



Storm 4SG



Stark 4SB



Silver 4SS



Pacific 4SP



Amazon 4SA

Material Content:
90% Polyester
10% Cotton

Double Rub Rating:
243,000

Finish:
Teflon

Properties:
46% Recycled 
Soil & Stain Resistant
Reduced Environmental Impact 

MOMENTUM IMPACT



Crimson 3IC



Stark 3IB



Relic 3IR



Serene 3IS



Grotto 3IG

Material Content:
80% Polyester
20% Olefin

Double Rub Rating:
114,000

Finish:
Teflon

Properties:
80% Recycled 
Soil & Stain Resistant
Reduced Environmental Impact 



CF STINSON CHAUNCEY



Peridot 4HG



Night 4HN



Chrome 4HC



Seamist 4HS



Paprika 4HP

Material Content:
100% Polyester

Double Rub Rating:
180,000

Finish:
Teflon

Properties:
90% Recycled 
Soil & Stain Resistant
Reduced Environmental Impact 

FABRIC GRADE 5 100% recycled fabrics with stain resistant finish. Refined textures in popular solids.

MAYER ESPRIT



Alabaster 5EA



Black 5EB



Smoke 5ES



Cobalt 5EC



Feldspar 5EF

Material Content:
100% Polyester

Double Rub Rating:
144,000

Finish:
Repellant

Properties:
100% Recycled 
Soil & Stain Resistant
Reduced Environmental Impact 

DESIGNTEX SINGING IN THE RAIN



Dusk 5SD



Charcoal 5SC



Nickel 5SN



Moss 5SM



Raisin 5SR

Material Content:
100% Polyester

Double Rub Rating:
100,000

Finish:
Nano-Pel

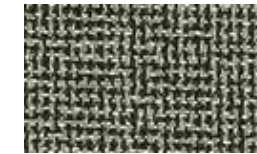
Properties:
100% Recycled 
Soil & Stain Resistant
Reduced Environmental Impact 

FABRIC GRADE 6 Extreme performance fabrics with Crypton® and Nano-tex® finishes.

CF STINSON METRO CRYPTON



Lake 6CB



Smoke 6CS



Marina 6CM



Lagoon 6CL



Gypsum 6CG

Material Content:
100% Polyester

Double Rub Rating:
100,000

Finish:
Crypton

Properties:
Anti-bacterial, Anti-microbial
Soil & Stain Resistant

DESIGNTEX ROCKET



Flame 6RF



Ink 6RI



Marine 6RM



Lime 6RL



Red-Orange 6RR

Material Content:
100% Polyester

Double Rub Rating:
100,000

Finish:
Nano-tex

Properties:
73% Recycled 
Soil & Stain Resistant
Reduced Environmental Impact 

RHINO™PLUS ANTI-MICROBIAL URETHANE

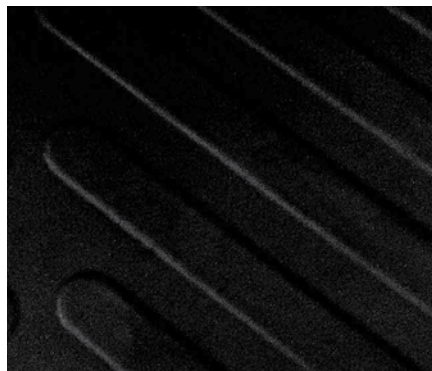
You can hang your hat on the strength and performance of RhinoPlus. The patented* combination of urethane over molded foam resists physical damage while providing an unparalleled blend of durability and comfort.

RhinoPlus:

- Resists punctures
- Resists abrasions and tears
- Cleans easily, even with bleach or ethanol
- Provides a comfortable seat for multiple shifts
- Seamless molded cover keeps out dirt and impurities
- Textured surface prevents slipping



RHINOPLUS



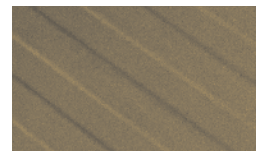
Night 292



Stone 219



Lake 207



Wood 225

Material Content:
100% urethane
PVC free

Ross Flex Rating:
-5° C < 25% Cut Growth
150,000 Flexes

Finish:
Non-slip

Properties:
Anti-bacterial, Anti-microbial
Soil & Stain Resistant
Reduced Environmental Impact 🌿

TEST	Tear Strength (kgF)	Stretch (%)	Abrasion Resistance (cycles)	Puncture Resistance (kgF)
Rhino™ skin (Pachyderm®)	17.7	660	25,000	9.9
Vinyl	8.3	160	5,000	5.8

*U.S. Patent No. 6528002

VINYL GRADE 2 Affordably-priced vinyl with a soil and stain resistant topcoat.

CF STINSON RALLY



Blue Ridge 2RR



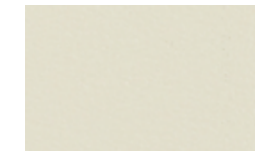
Black 2RB



Dove 2RD



Imperial Blue 2RI



Alabaster 2RA

Material Content:
100% Contract Vinyl

Double Rub Rating:
250,000

Finish:
Topcoat

Properties:
Anti-bacterial, Anti-microbial
Soil & Stain Resistant

CF STINSON LAREDO



Chocolate 2LC



Onyx 2LO



Quarry 2LQ



Niagra 2LN



Pelican 2LP

Material Content:
100% Contract Vinyl

Double Rub Rating:
250,000

Finish:
Topcoat

Properties:
Anti-bacterial, Anti-microbial
Soil & Stain Resistant
Leather-touch

VINYL GRADE 3 Performance vinyl with a brushed knit polyester backing and Resilience® finish.

MAYER KEY LARGO



Aqua 3KA



Graphite 3KG



Palm 3KP



Cayenne 3KC



Sand 3KS

Material Content:
100% PVC Vinyl

Double Rub Rating:
100,000

Finish:
Resilience

Properties:
**Anti-bacterial, Anti-microbial
Soil & Stain Resistant**

VINYL GRADE 5 100% vinyl with polyester backing and advanced topcoat. Ideal for healthcare applications.

CF STINSON - TESSUTO



Murano 5TM



Palazzo 5TP



Veneto 5TV



Lime 5TL



Majesty 5TA

Material Content:
100% Vinyl

Double Rub Rating:
100,000

Finish:
**Topcoat
SilverGuard
PermaBlock**

Properties:
**Anti-bacterial, Anti-microbial
Soil & Stain Resistant**

VINYL GRADE 4 100% polyurethane PVC-free polyester faux leather with knit backing.

MOMENTUM CANTER



Earth 4CE



Onyx 4CO



Chestnut 4CC



Night 4CN



Sand 4CS

Material Content:
**100% Polyurethane,
PVC free**

Double Rub Rating:
102,000

Finish:
Repellant

Properties:
**Anti-bacterial, Anti-microbial
Soil & Stain Resistant
Reduced Environmental Impact** 

VINYL GRADE 6 High performance vinyl with Blockade® and Nanocide™ keeps germs at bay.

MAYER GUARDIAN



Jade 6GJ



Ebony 6GE



Greige 6GG



Shadow 6GS



Cyan 6GC

Material Content:
100% Vinyl

Double Rub Rating:
3,000,000

Finish:
**Blockade
Nanocide**

Properties:
**Antibacterial, Antimicrobial
Soil & Stain Resistant**

FABRIC AND VINYL-ESD Woven specialty fabric that meets the ESD Association standards for content and resistance.

CF STINSON STATIC - ESD



Mid-Blue ESM



Navy ESN



Midnight ESB



Charcoal ESC



Black Vinyl ESV
(For combination ESD/
Cleanroom, ESD Black
Vinyl must be used)

Material Content:
99% Nylon
1% Carbon Fiber

Double Rub Rating:
180,000

Customer's Own Material (COM) - Grade 1

If you would like to use a COM fabric or vinyl call Cramer Customer Care at 800.366.6700 to see if your selection is already on our extensive list of approved textiles. If the COM has not yet been approved, simply send us a memo sample and note the product to which the COM will be applied along with your contact information. We will contact you with approval after the memo is received.

When you're ready to place your order, submit your COM to us at Cramer LLC, Attn: COM Dept, 1222 Quebec Street, North Kansas City, MO 64116. On your PO, use "COM" as the fabric code (ex. EMMD1-COM-1) and note the COM vendor, pattern name, and color in the item description. Lead time on COM orders begins once COM is received. If you require a specific ship date, also note the date your COM will ship from the vendor.

Our COM yardage requirements (based on 54" wide fabric) are 1.5 yards per Round Stool or Dimension, and 2 yards per ever, Triton, Triton Max, Fusion, or Centris. If you are ordering a large quantity of chairs or have a COM with a large repeat, we can provide a specific yardage quote for your needs. Excess yardage will be disposed of after order production. We assume no responsibility for the durability or tailoring quality of any COM.



1222 Quebec Street
North Kansas City, Missouri 64116
1.800.366.6700 fax 1.800.607.2821